

Taunton Garden Town

Corporate
Scrutiny
Committee

3rd August 2022

Jenny Clifford
Garden Town Implementation
Manager



Somerset West
and Taunton



Somerset West
and Taunton

Taunton Garden Town - Background

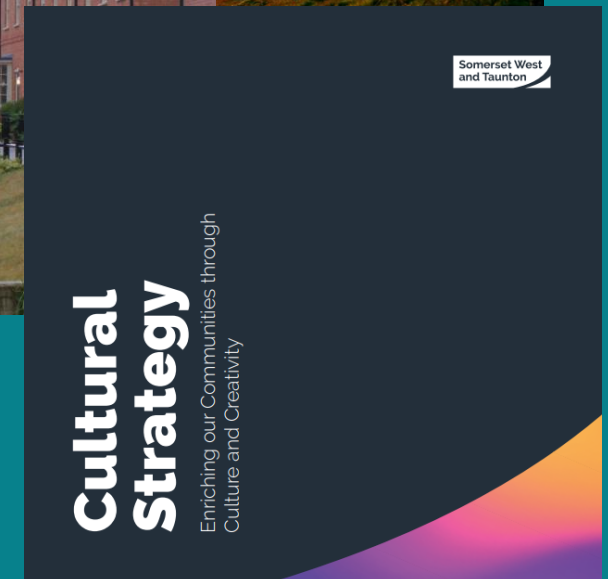
- New communities programme
- Well-planned, well-designed garden communities
- Opportunities for long-term housing, economic growth and increase productivity
- Timely delivery of infrastructure
- Locally led
- Accelerated delivery
- Innovation

Garden community qualities

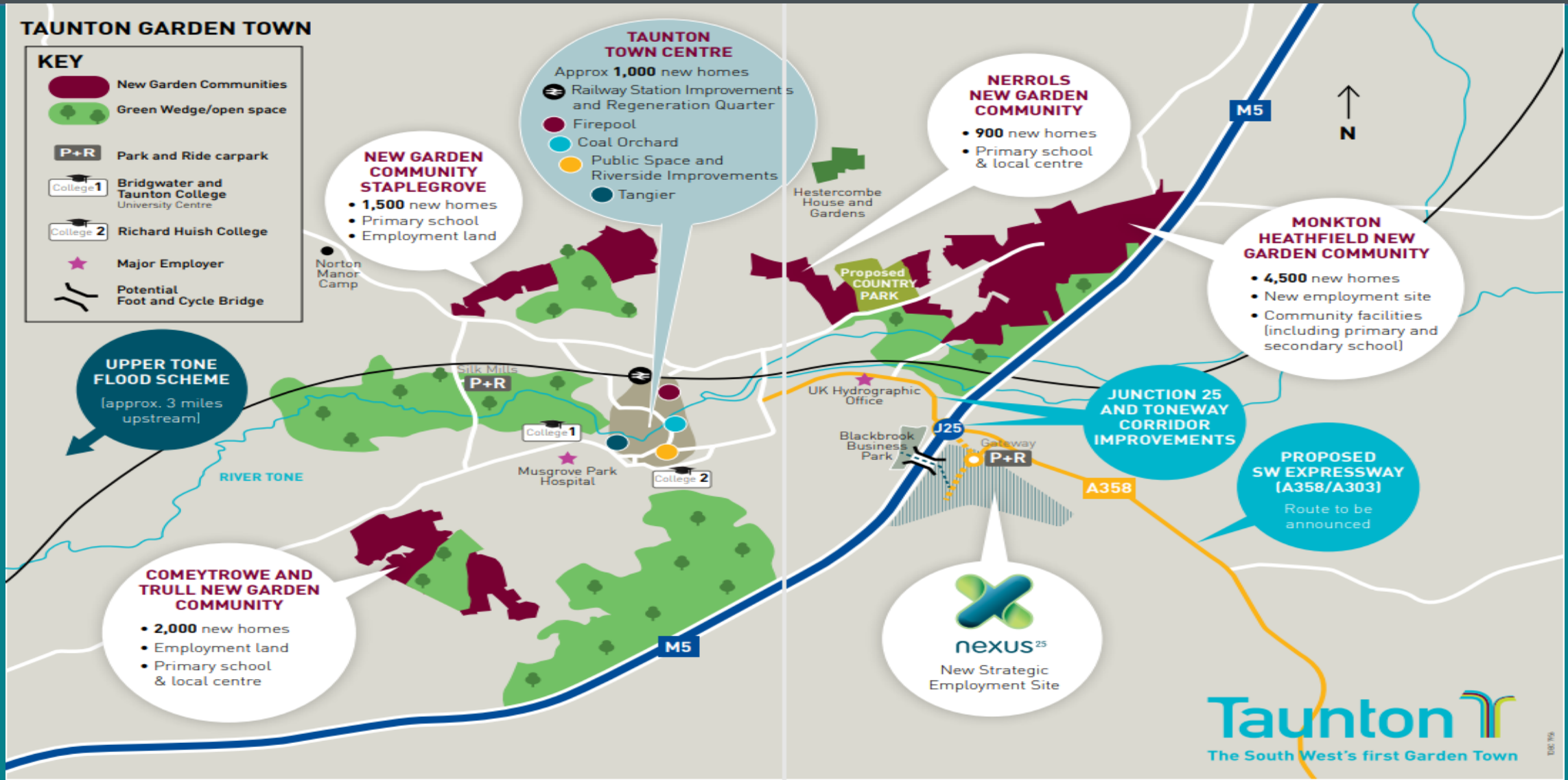
- Clear identity
- Sustainable scale
- Well-design places
- Great homes
- Strong local vision and engagement
- Transport
- Healthy places
- Green space
- Legacy and stewardship arrangements
- Future proofed

Corporate alignment

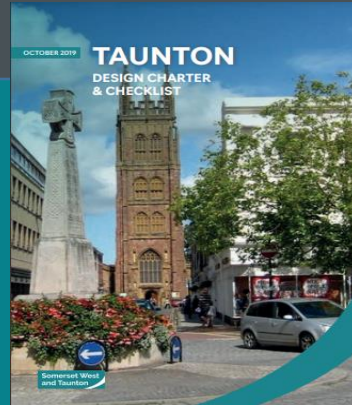
- Corporate Strategy: Priority themes and outcomes
- Carbon Neutrality and Climate Resilience Action Plan
- Ecological Emergency: Vision and Action Plan
- Cultural Strategy & delivery plan



Taunton Garden Town



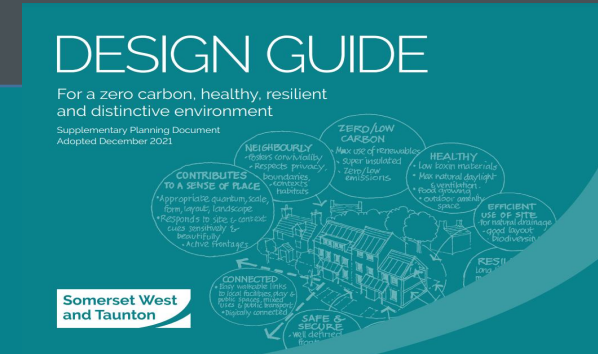
Taunton Garden Town – timeline so far



Design charter and checklist



Quality Review Panel established



District wide design guide for carbon zero, healthy, resilient and distinctive environment

Taunton Garden Town designation

2017

2019

2019

2021

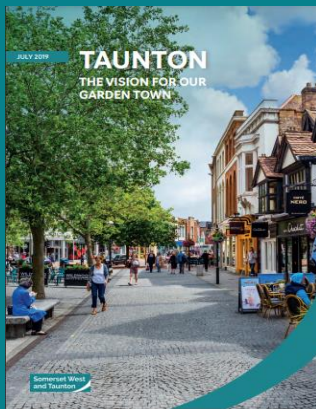
2021

2021

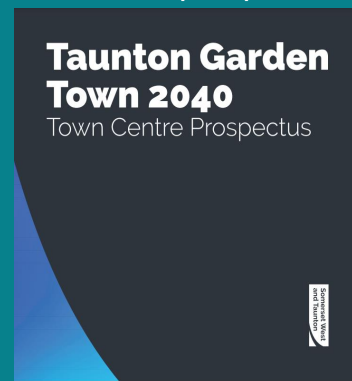
2021

2022

Vision adopted



Taunton Garden Town 2040: town centre prospectus



Garden town public realm design guide



+ Garden town governance, stewardship, active travel

Taunton Garden Town – Vision

1.

Grow our town greener – transforming our open spaces and streets

Quality of our Environment: give our town a green makeover, joining up our green spaces, waterways, parks and play spaces, planting more street trees and woodlands and managing our water more imaginatively with wetlands and rain gardens to improve it for recreation, tourism and wildlife.

2.

Branching out – moving cleaner, moving smarter

Quality of our Movement: we will integrate our transport network so that it serves Taunton with much improved bus and appropriate vehicle links to our main destinations and make much better prioritised provision for walkers and cyclists encouraging healthier and more sustainable journey choices as attractive alternatives to travelling by car.

3.

Growing quality places to live – town centre, new and existing neighbourhoods

Quality of our places and neighbourhoods: we will deliver an outstanding built environment focused on places and spaces with high quality neighbourhoods, green streets and public spaces and with homes and buildings that are distinctly local in appearance. Our houses, offices, employment areas, public services and road infrastructure will embrace innovation, will be energy efficient and will exploit the latest sustainable technologies.

4.

New shoots and blossom – a dynamic and prosperous community founded on knowledge, culture and business

Quality of opportunity: we will responsibly nourish partnership, prosperity and growth in social value, through our strengths in knowledge, education, culture and business. We will germinate and grow sustainable arts and cultural venues as hubs that foster excellence in the region. We will pursue low carbon and digital infrastructure to make a town that connects businesses and markets well, drawing on our University Centre and growth industries in digital, land, marine informatics, health and nuclear.



Our Vision

“Taunton, the County Town of Somerset will be flourishing, distinctive, and healthy – and the country’s benchmark Garden Town. We will be proud to live and work in a place where the outstanding natural environment, diverse and thriving economy and inspiring cultural offer, contribute to an exceptional quality of life and well-being”.



Investment and regeneration

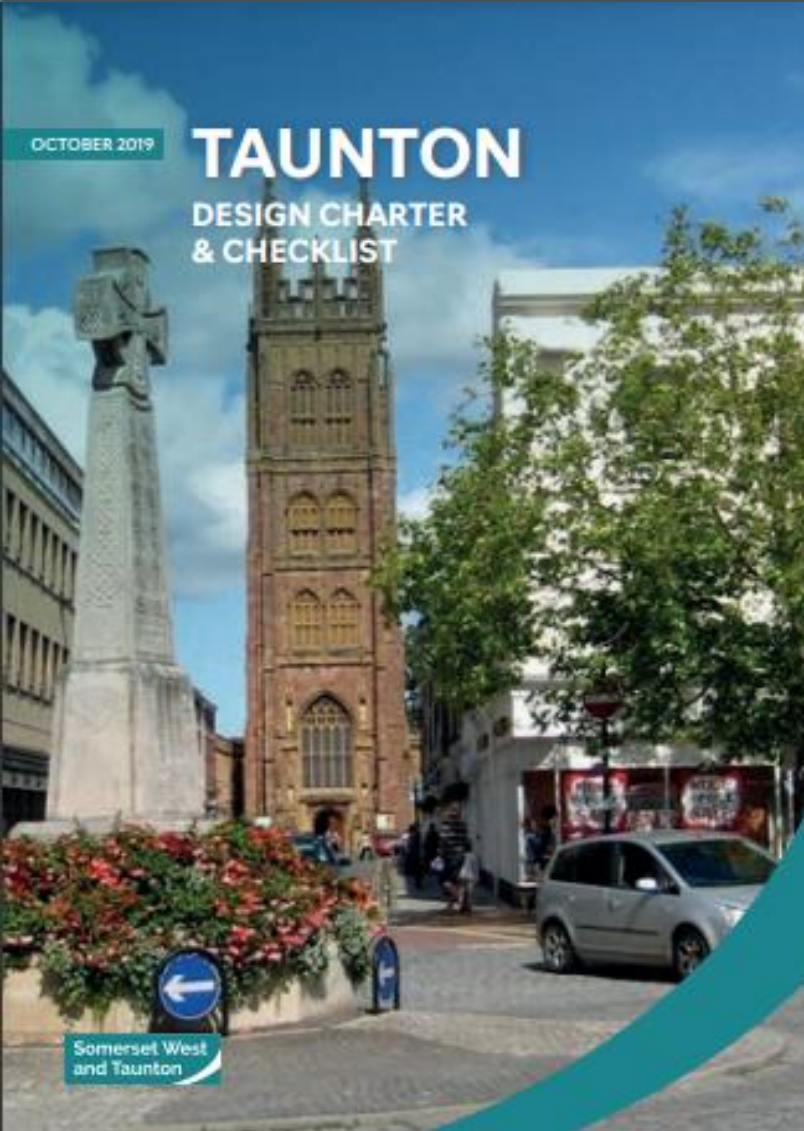
Taunton Garden Town 2040

Town Centre Prospectus

Somerset West
and Taunton



Quality & design guidance



PUBLIC REALM

design guide for Taunton Garden Town
Supplementary Planning Document

ADOPTED DECEMBER 2021

Somerset West
and Taunton

DESIGN GUIDE

For a zero carbon, healthy, resilient
and distinctive environment

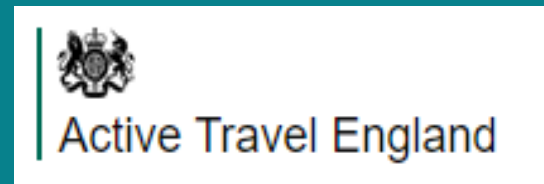
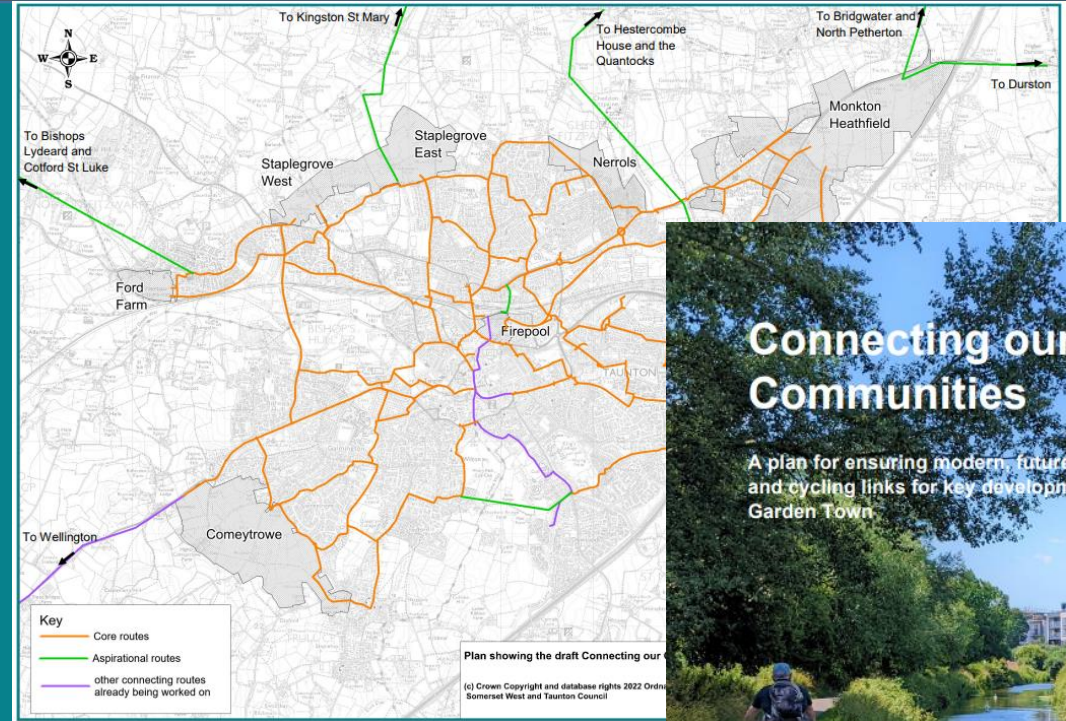
Supplementary Planning Document
Adopted December 2021

Somerset West
and Taunton



Active travel (Connecting our Garden Communities)

- Active travel:
- Future High Street Fund delivery
- Connecting our Garden Communities
 - Public consultation
 - Concept plans => Business case development
 - Future funding bids
- Active Travel England pilot authority



Infrastructure delivery plan and engagement

Infrastructure requirements arising from garden town development sites

Transport

Utilities

Health & social care

Community facilities

Telecoms

Flood risk management

Education

Open space, play

Sports & recreation

Waste

Prioritisation: Critical, essential, required

Estimated cost

Funding sources

Delivery

Exploring ways to increase public engagement over infrastructure planning and delivery

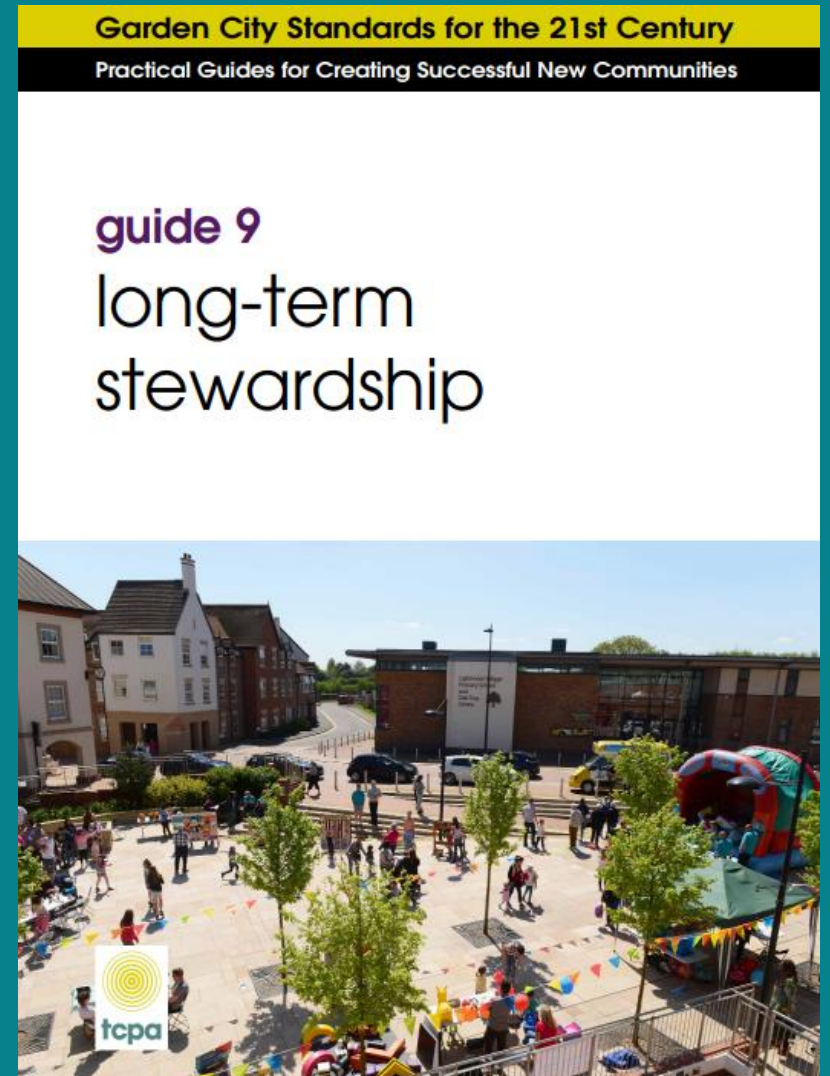


Stewardship

'Ensuring that a community asset is properly looked after in perpetuity'

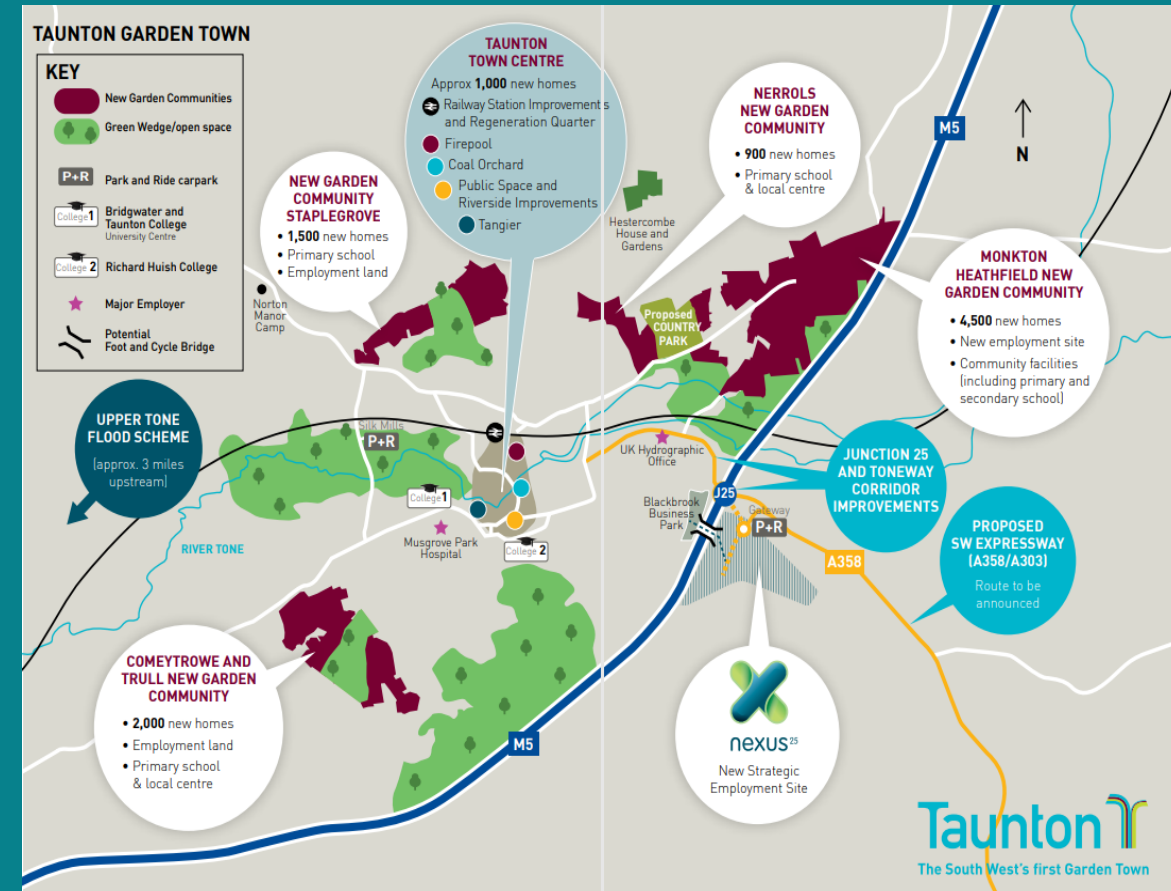
Vision: “Legacy and **stewardship** arrangements: should be in place for the care of community assets, infrastructure and public realm, for the benefit of the whole community.”

- Potential stewardship arrangements
- Stewardship objectives & principles
- Identification of assets and opportunities
- Options and delivery plan



Delivery

- **Monkton Heathfield** – Phase 1 near completion, Phase 2 application
- **Nerrols** – Delivering
- **Comeytrove/Trull**- Delivering phase 1
- **Ford Farm, Norton Fitzwarren** – Delivering
- **Staplegrove** – Yet to commence, wetland
- **Coal Orchard** – Near completion
- **Firepool** - Initial phases complete, Innovation Centre underway, masterplanning final phases
- Impact of phosphates



Funding

- **Housing Infrastructure Fund (Staplegrove) £14.2m**
- (spine road and primary school)
- **Garden Communities Programme:**
- Annual, competitive bidding

Capacity fund

- Accelerate delivery
- High quality sustainable placemaking
- Innovation in delivery
- 21/22 £250,000 awarded (£5.8m pot)

Capital fund

- Local infrastructure works, business cases & accelerated delivery
- Spend by end of 22/23
- 21/22 Awarded £400,000 (£6m pot)



Department for Levelling Up,
Housing & Communities



Funding

Since 16/17 capacity awards:

- Staff: Garden town, development enablers, green infrastructure, engagement, highways
- Grants- Monkton Heathfield, North Taunton and town centre regeneration
- Country Park purchase
- Business case development and bid advice (incl Future High Street Fund)
- Match funding- green infrastructure projects
- Garden Town visioning, culture & Taunton 2040
- Strategies and evidence: Culture, green infrastructure, waterways, active travel, infrastructure delivery, asset stewardship
- Design guidance & masterplanning



Department for Levelling Up,
Housing & Communities



Future work

- Governance arrangements for the Garden Town
- Delivery of strategic sites aligned to the Vision
- Establish stewardship arrangements
- Branding and website review
- Culture, business and innovation
- Carbon reduction
- Ecological emergency, green infrastructure, biodiversity net gain
- Infrastructure delivery including Staplegrove HIF scheme (spine road and primary school)
- Active travel- business case and bidding
- Mobility hubs
- Design codes for strategic sites

Subject to future funding from Homes England or other sources



Somerset West
and Taunton

Q&A

Any questions?