



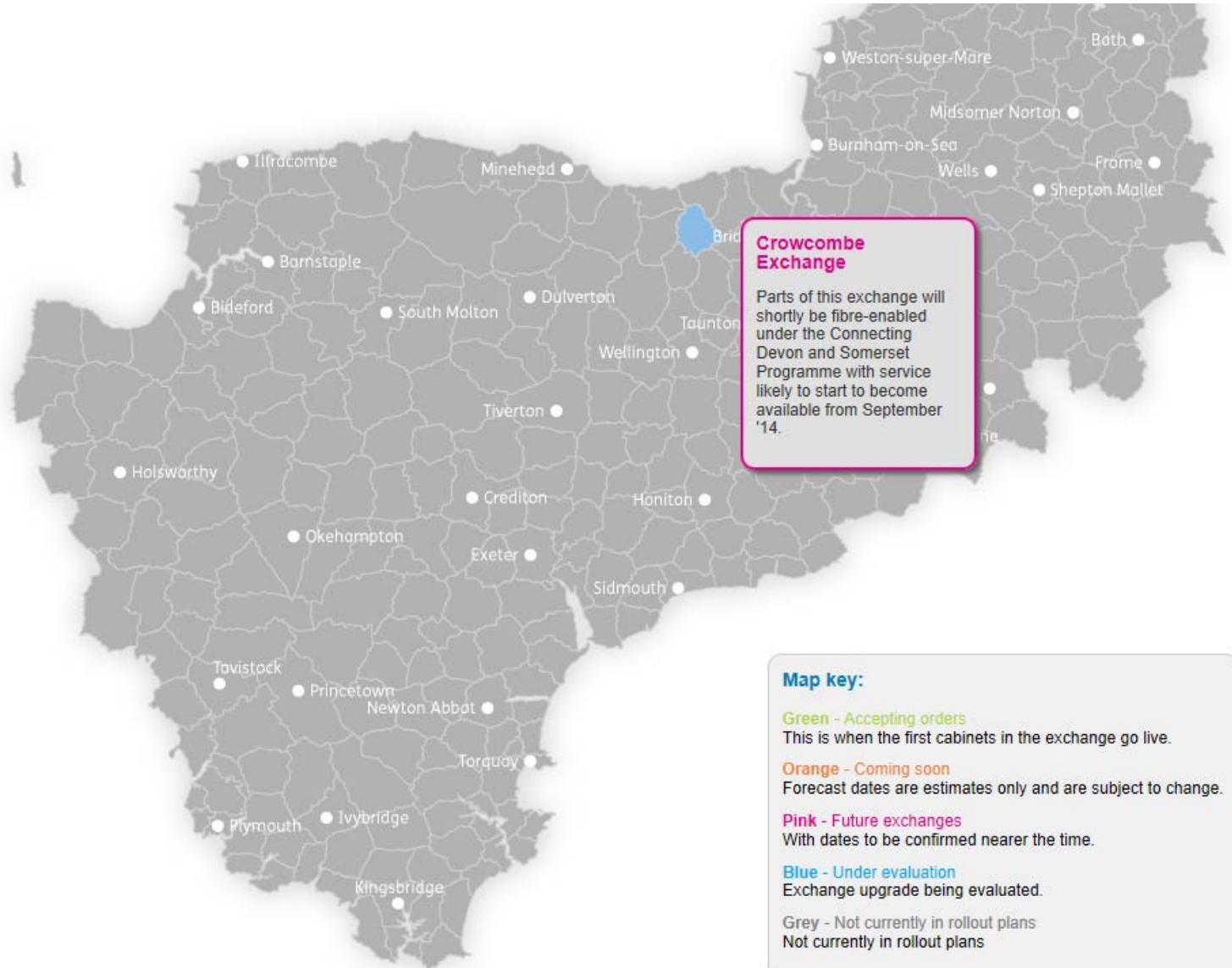
- Contract signed 29 January 2013
- Eleven implementation phases with implementation completing late 2016. No bias between Devon and Somerset.
- Plan includes 2 economic (Bridgwater and East of Exeter) and 2 social (Torrige and West Somerset) priority areas which have been scheduled at the front end of the plan.
- 6 – 9 months average to survey, design and plan per phase. The survey and planning process has started.
- 3 – 6 months average deployment per phase. First cabs forecast to be deployed and first services available to businesses & residents by year end 2013.

NB. dates are subject to survey



Interactive Coverage

Connecting Devon and Somerset



Interactive Coverage

Connecting Devon and Somerset



Exchange	Status
Crowcombe	Future Exchange (starting to go live from Sept 14)
Dunster	Under evaluation
Minehead	Under evaluation
Stogumber	Under evaluation
Washford	Under evaluation
Williton	Under evaluation

Green - Accepting orders

This is when the first cabinets in the exchange go live.

Orange - Coming soon

Forecast dates are estimates only and are subject to change.

Pink - Future exchanges

With dates to be confirmed nearer the time.

Blue - Under evaluation

Exchange upgrade being evaluated.

Grey - Not currently in rollout plans

Not currently in rollout plans

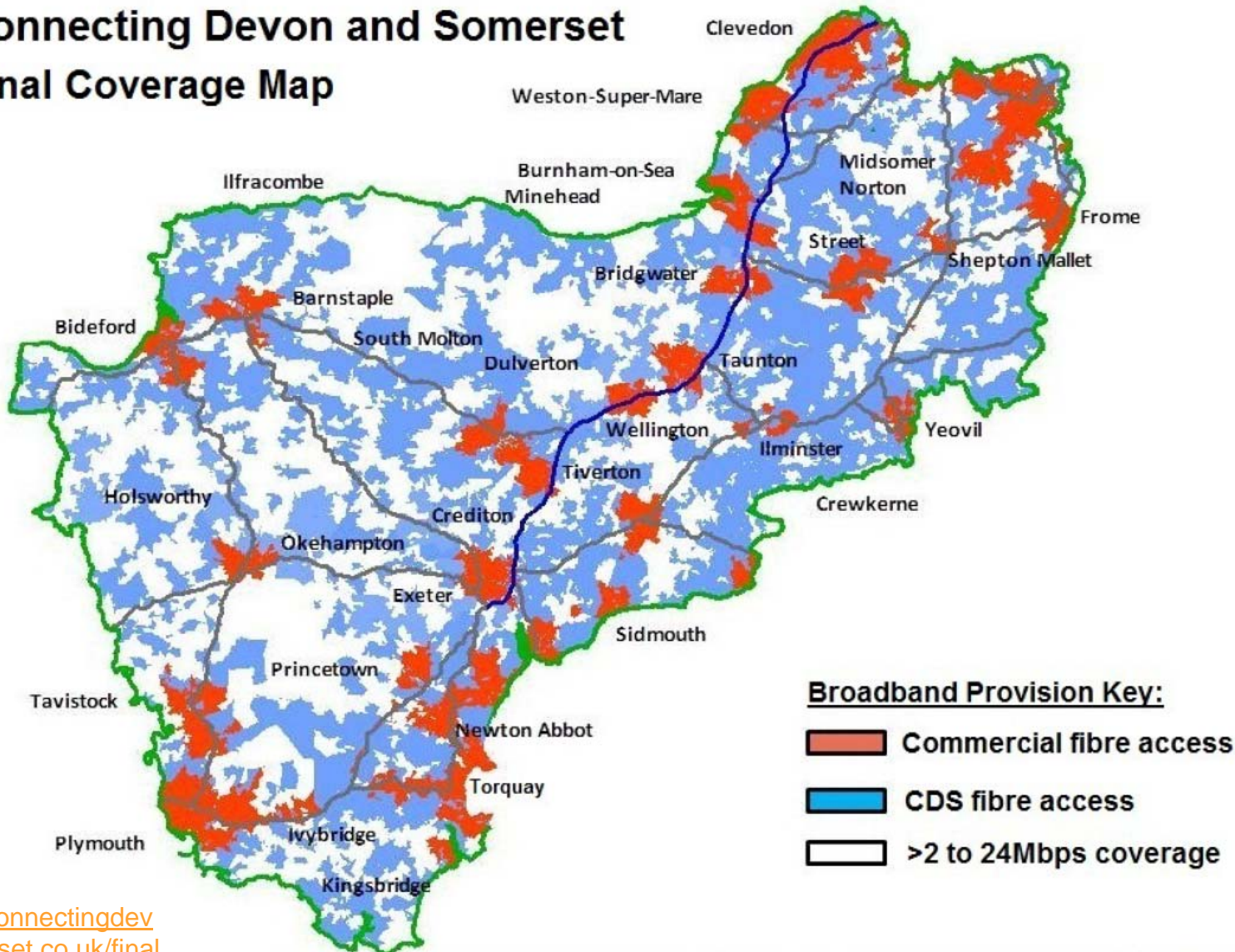


Planned Coverage

Connecting Devon and Somerset



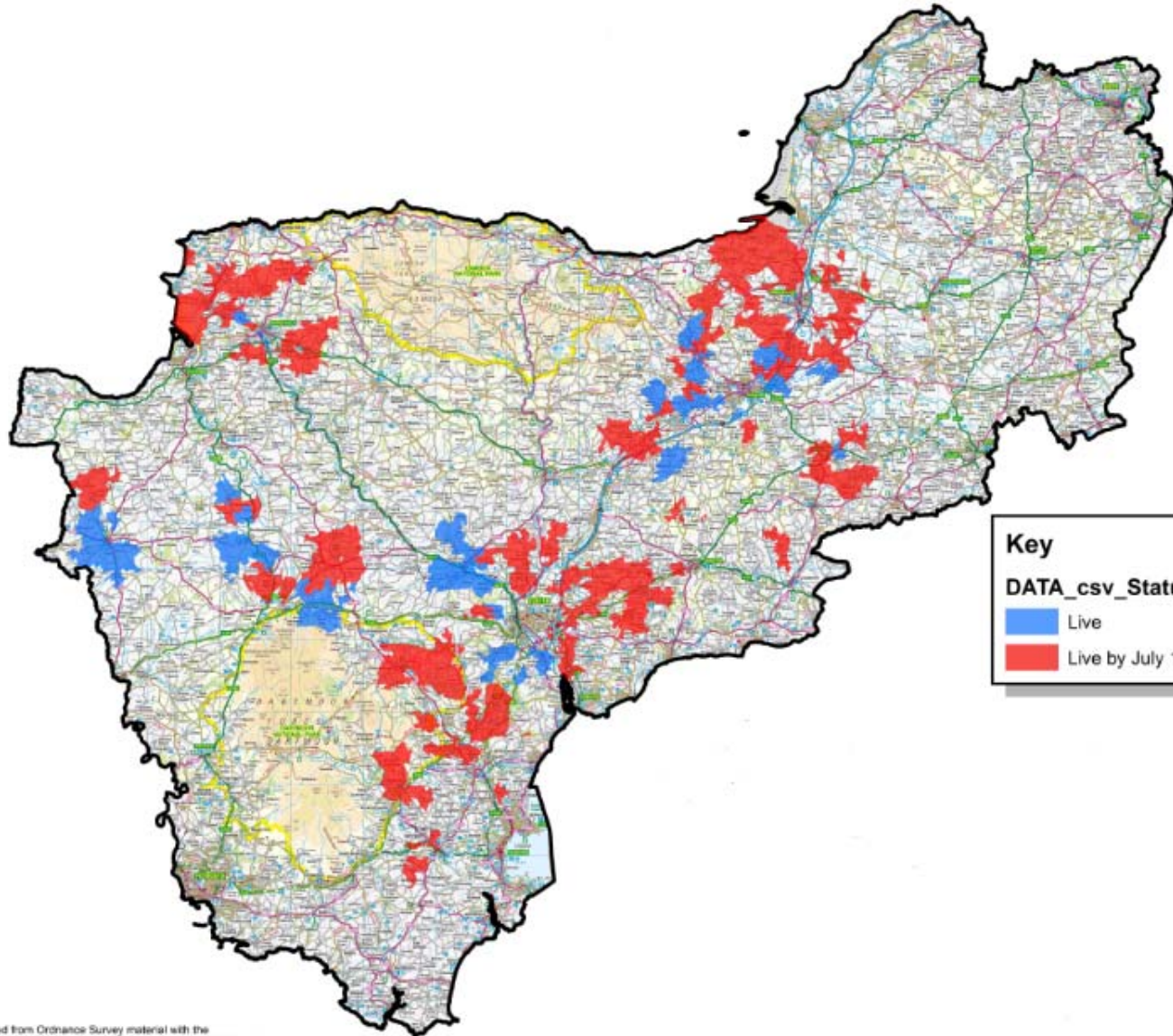
Connecting Devon and Somerset Final Coverage Map





<http://www.connectingdevonandsomerset.co.uk/final-coverage-map/>

Post survey build map

Connecting Devon and Somerset



Key
DATA_csv_Status

	Live
	Live by July 14

<http://www.connectingdevonandsomerset.co.uk/current-infrastructure-deployment/>



- Only when an exchange and a cabinet location have been surveyed and planned can we be reasonably certain whether an area will receive coverage. If significant difficulties are encountered coverage could be moved to another area e.g. high volumes of new duct, wayleaves, geography, power too distant, etc. if these are widespread in an exchange area it could make the whole area too difficult.
- Even when we have surveyed an area a build can run into unexpected and sometimes extended delays e.g. works by other utilities along highways, and bad weather.
- Build doesn't fit neatly into postcodes and communities and this has to be carefully explained so people interpret the information correctly.
- The contract scope was base-lined before signature so new developments since then are not in scope.
- Other funding streams have been announced by the government and applications are being made to these to extend coverage beyond current plans.
- High speed broadband is becoming critical to people's home and business life and they need to be able to make important decisions based upon sound information.



Funded
by:



Getting the communication right

Connecting Devon and Somerset



A road leading to one of the cabinets we are building near Bradford on Tone just after Christmas.





By 31st December 2013 we had passed over 16,000 homes

We are expecting to pass 70,000 homes by the end of July 2014



Funded
by:





Report (End of month)

Confirms Build List Locations (3 month rolling forecast)

Review at 4th Mkting Mtg/Month

Build Advice to PCs

Letter to Parishes advising of build within next 30 days

New Live Cabs

- 1) Press release
- 2) CDS Flyer drop (1 week post Live Date)